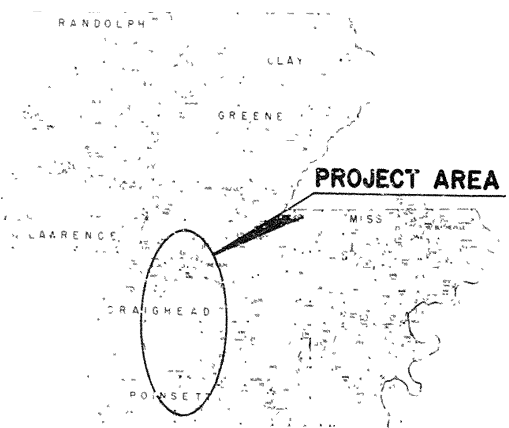


STATE OF ARKANSAS  
STATE HIGHWAY COMMISSION

PLAN AND PROFILE OF PROPOSED  
STATE HIGHWAY  
HARRISBURG - NORTH (RELOCATION)

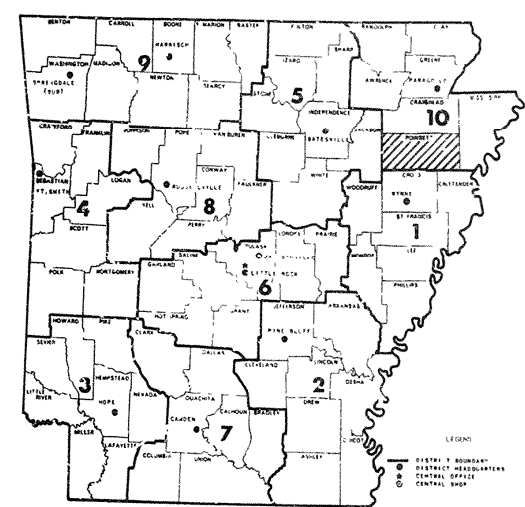
DATE REVISED	DATE FILMED	DATE REVISED	DATE FILMED	FED. ROAD DIST. NO.	STATE	FED. AID PROJECT NO.	NO. SHEET	TOTAL SHEETS
				6	ARK.			
				JOB NO.		10842	1	122
② TITLE SHEET								



DISTRICT 10

POINSETT  
COUNTY  
ROUTE 1 SECTION 16

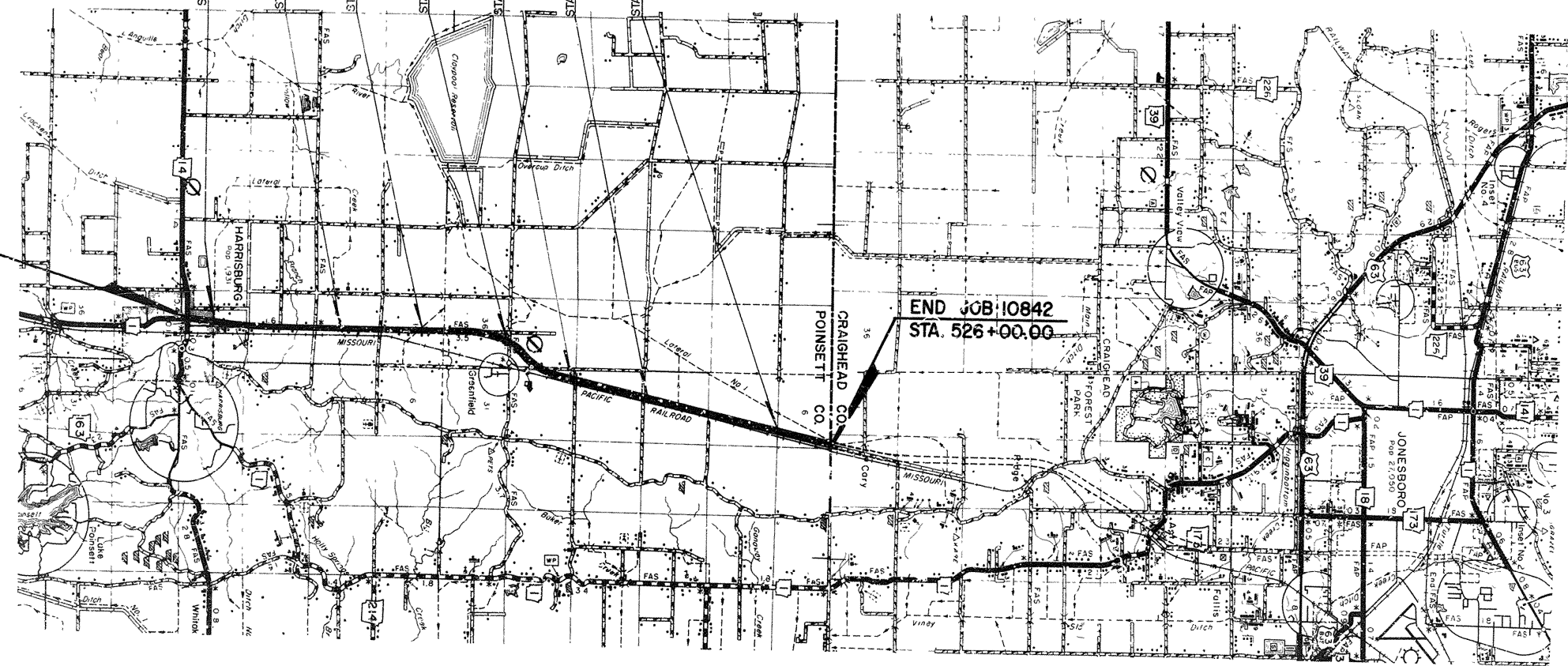
JOB 10842  
LAYOUT SCALE 1" = 5000'



POINSETT COUNTY

BEGIN JOB 10842  
STA. 5+21.00

END JOB 10842  
STA. 526+00.00



GROSS LENGTH OF PROJECT	52,072.00 FEET OR	9.863 MILES
NET " " ROADWAY	51,895.80 " "	9.829 " "
NET " " BRIDGES	183.20 " "	.034 " "
NET " " PROJECTS	52,079.00 " "	9.863 " "

P&S JOB 10822

DESIGN DATA
DESIGN YEAR 1993
1973 ADT = 1110
1993 ADT = 2220
1993 DHV = 244
D = 60%
T = 87%
V = 60MPH
SUBMITTED BY P & R 10-17-72

RECOMMENDED FOR APPROVAL	
RECOMMENDED FOR APPROVAL	BRIDGE DESIGN ENGINEER
RECOMMENDED FOR APPROVAL	ROADWAY DESIGN ENGINEER
RECOMMENDED FOR APPROVAL	DISTRICT ENGINEER
APPROVED	CHIEF ENGINEER
U.S. DEPARTMENT OF TRANSPORTATION FEDERAL HIGHWAY ADMINISTRATION	
RECOMMENDED FOR APPROVAL	
APPROVED	DATE
APPROVED	
DIVISION ENGINEER	DATE

## STRUCTURES OVER 20' - 0" SPAN

2.27 : USE TYPE "C" "DOWN" C" PIPE INSTALLATIONS.

## EARTHWORK

BASIS OF ESTIMATE:  
 SOD MULCH - 85 SQ. FT. AREA - ; CU. YD.  
 LIME - 7.5 LBS. PER CU. YD. (2000 LB. = 1 TON)  
 WATER FOR GRASS - 10 GAL. PER SQ. YD. OR 48.4 M. GAL. PER ACRE OVERSEEDING  
 10 GAL. PER SQ. YD. OR 48.4 M. GAL. PER ACRE SECOND  
 SEEDING APPLICATION

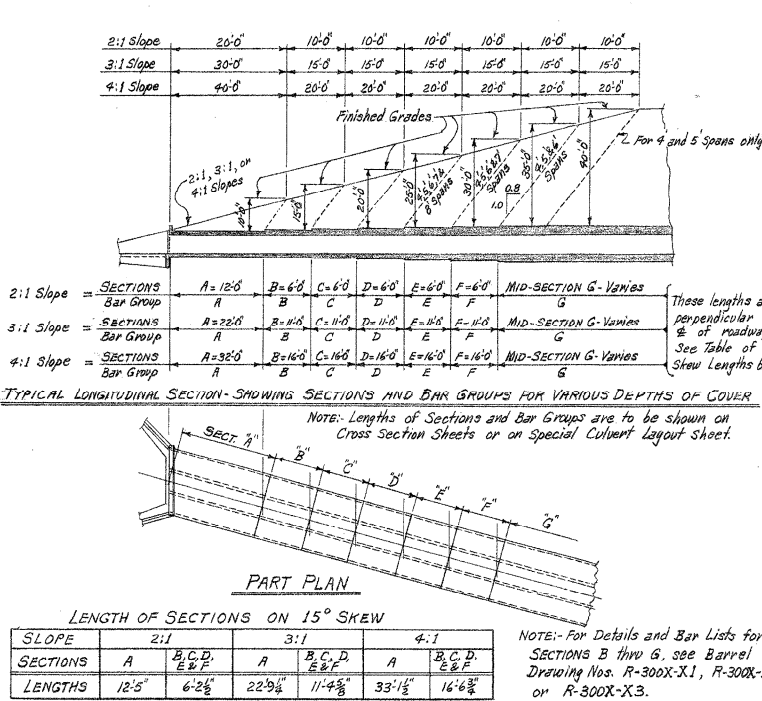
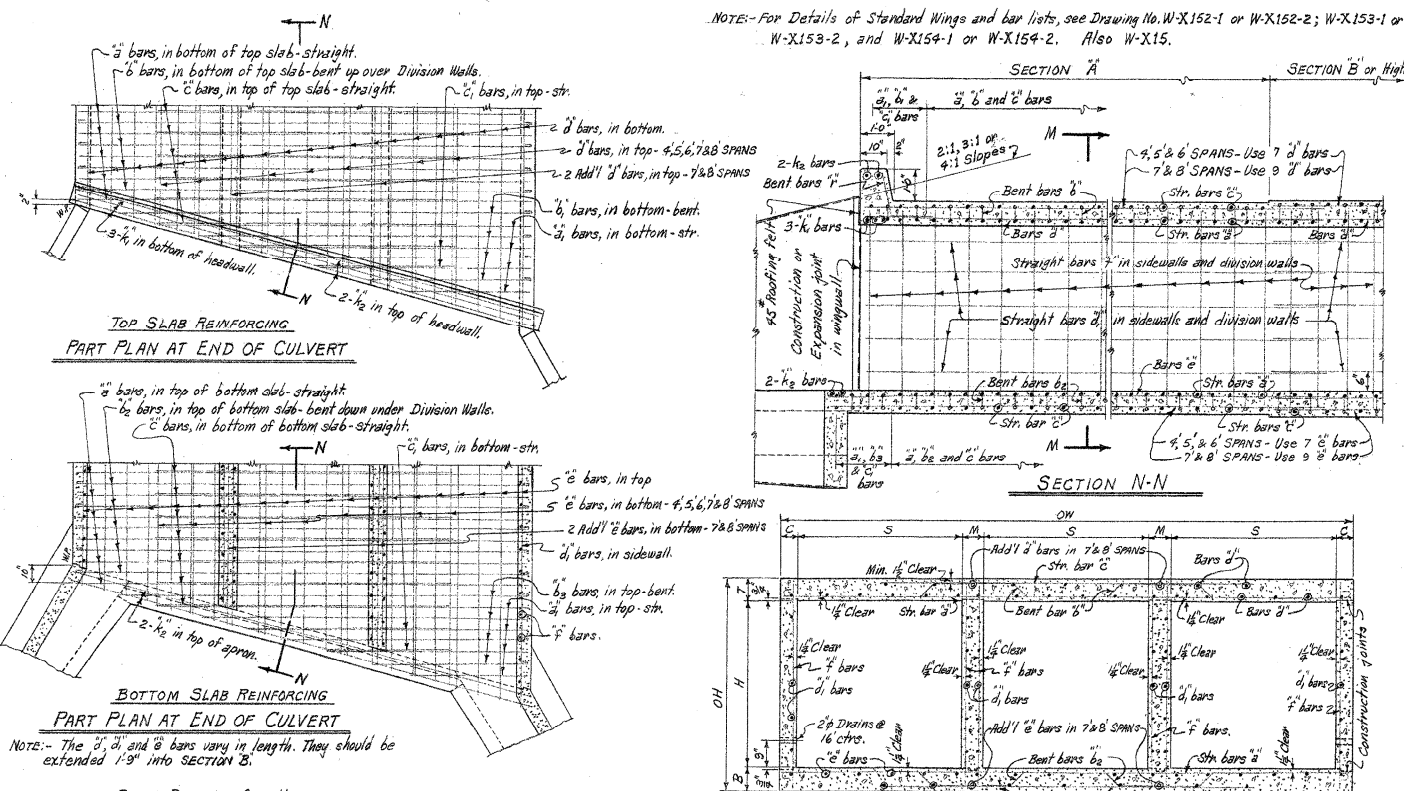
## PIPE SIPHON

STATION	DESCRIPTION	18"
		DIAMETER LIN. FT.
268+00	SEE FPC-2A	147
279+50	SEE FPC-2A	138
184+60	SEE FPC-2A	140
TOTAL		325

BASIS OF ESTIMATE:  
 SEEDING - TO BE PERFORMED ON ALL SLOPES  
 1 IMP. = 3 TONS PER ACRE  
 MULCH COVER - 1 ACRE PER ACRE OF SEEDING  
 WATER FOR GRASS - 10 GALS. PER SQ. YD. OR 48.4 M. GAL. PER ACRE SEEDING  
 WATER FOR GRASS - 10 GALS. PER SQ. YD. OR 48.4 M. GAL. PER ACRE SECOND SEEDING APPLICATION  
 NOTE:  
 ESTIMATED QUANTITIES -  
 TO BE USED AT PLANT SITES, EQUIPMENT STORAGE AREAS, BORROW PITS, AND QUARRIES AS  
 REQUIRED TO COMPLY WITH THE PLAN.

FED. ROAD DIST. NO.	STATE	FED. AID PROJECT	FISCAL YEAR	SHEET NO.	TOTAL SHEETS
6	ARK				
JOB No.					

NOTE: For Details of Standard Wings and bar lists, see Drawing No. W-X152-1 or W-X152-2; W-X153-1 or W-X153-2, and W-X154-1 or W-X154-2. Also W-X15.



SECTIONS AND BAR GROUPS TO BE USED FOR VARIOUS DEPTHS OF COVER

DEPTH OF COVER	SECTIONS & BAR GROUPS FOR END SECTIONS						MID-SECTION AND BAR GROUP
	A	B	C	D	E	F	
5.0' to 9.5'	A	B	C	D	E	F	A
10.0' to 14.5'	A	B	C	D	E	F	B
15.0' to 19.5'	A	B	C	D	E	F	C
20.0' to 24.5'	A	B	C	D	E	F	D
25.0' to 29.5'	A	B	C	D	E	F	E
30.0' to 34.5'	A	B	C	D	E	F	F
35.0' to 39.5'	A	B	C	D	E	F	G

MAX. DESIGN DEPTH OF COVER	BARREL DIMENSIONS										QUANTITIES - ONE SECTION A'							
	CLEAR SPANS		CLEAR HEIGHT	SECT. OPENING	OVERALL WIDTH	THICKNESS OF TOP SLAB	THICKNESS OF SIDEWALLS	THICKNESS OF DIVISION WALLS	OVERALL HEIGHT	ROADWAY LENGTH	LENGTH OF HEADWALL	CLASS 5 CONCRETE			REINFORCING STEEL			
												BARREL ONLY			BARREL, APRON AND HEADWALL			
	2:1	3:1	4:1	2:1	3:1	4:1	LB.	LB.	LB.									
D	S	H	A	OW	T	C	M	B	OH	RL	K	CuYd.	CuYd.	CuYd.	LB.	LB.	LB.	
SECTION A' = 10'-0"	4' @ 3'	2'	24	14'-4"	6'	6"	8"	6"	3'-0"	14'-0"	10'-0"	8.74	16.03	23.32	1969	2205	2553	
		3'	36	21'-4"		4'-0"	"		"	9.81	17.39	26.17	1578	2693	3920			
		4'	48	28'-4"		5'-0"	"		"	10.89	19.97	29.05	1686	2893	4100			
		5'	60	35'-4"		6'-0"	"		"	11.96	21.33	31.90	1795	3074	4274			
		6'	72	42'-4"		7'-0"	"		"	12.93	22.87	37.63	1922	3293	4689			
	5' @ 4'	3'	45	17'-4"	6"	8"	6'-1"	17'-4"	10'-5"	11.86	21.75	31.63	1986	3434	4944			
		4'	60	24'-4"	6"	8"	6'-1"	"	"	12.93	23.70	34.48	2095	3687	5111			
		5'	75	31'-4"	6"	8"	6'-1"	"	"	14.01	25.69	37.34	2204	3817	5389			
		6'	90	38'-4"	7"	9"	7'-1"	18'-4"	18'-10"	16.15	29.62	43.09	2335	4044	5723			
		7'	105	45'-4"	7 1/2"	10"	8'-1"	18'-4"	19'-1"	18.31	33.59	49.26	2466	4633	6460			
	6' @ 5'	3'	59	25'-4"	6"	8"	6'-2"	20'-0"	21'-0"	14.13	26.91	37.70	2161	4269	6064			
		4'	72	32'-4"	6"	8"	6'-2"	"	"	15.20	27.97	40.54	2273	4599	6393			
5'		90	39'-4"	7"	9"	6'-2"	"	"	16.28	29.85	43.43	2402	4650	6614				
6'		108	46'-4"	7"	9"	7'-2"	21'-4"	21'-10"	18.35	33.86	49.22	2520	4969	6945				
7'		126	53'-4"	7 1/2"	10"	8'-2"	21'-4"	22'-2"	20.61	37.80	54.99	3101	5521	7877				
SECTION A' = 10'-0"	7' @ 6'	8'	144	214'-0"	8"	10"	9'-2"	21'-4"	22'-6"	22.80	40.90	59.39	3380	5969	8426			
		9'	162	231'-4"	8"	10"	9'-3"	24'-0"	25'-4"	25.33	46.92	68.10	4127	7049	10503			
		10'	180	248'-4"	8"	10"	9'-3"	24'-0"	25'-4"	25.33	46.92	68.10	4127	7049	10503			
		11'	198	265'-4"	8"	10"	10'-3"	25'-2"	26'-6"	26.69	52.24	75.39	4367	7597	10767			
		12'	216	282'-4"	8"	10"	10'-3"	25'-2"	26'-6"	26.69	52.24	75.39	4367	7597	10767			
	8' @ 8'	3'	120	216'-8"	7"	9"	8'-5"	27'-8"	27'-10"	21.95	40.26	58.56	4000	6772	9555			
		4'	144	266'-8"	7"	9"	8'-5"	27'-8"	28'-10"	24.01	44.99	64.06	4047	6783	9703			
		5'	168	266'-8"	7 1/2"	10"	9'-5"	27'-10"	28'-10"	25.24	44.29	67.34	4106	7068	10103			
		6'	192	272'-0"	8"	10"	9'-5"	27'-10"	28'-10"	25.24	44.29	67.34	4106	7068	10103			
		7'	216	272'-0"	8"	10"	9'-5"	27'-10"	28'-10"	25.24	44.29	67.34	4106	7068	10103			
	9' @ 8'	3'	144	266'-8"	7 1/2"	10"	9'-5"	27'-10"	28'-10"	25.24	44.29	67.34	4106	7068	10103			
		4'	168	266'-8"	7 1/2"	10"	9'-5"	27'-10"	28'-10"	25.24	44.29	67.34	4106	7068	10103			
5'		192	272'-0"	8"	10"	9'-5"	27'-10"	28'-10"	25.24	44.29	67.34	4106	7068	10103				
6'		216	272'-0"	8"	10"	9'-5"	27'-10"	28'-10"	25.24	44.29	67.34	4106	7068	10103				
7'		240	278'-0"	10"	12"	11'-5"	28'-8"	29'-2"	32.51	58.91	85.49	5017	8555	12132				